



In partnership with



## Your Appointment Details:

Time: \_\_\_\_\_ Date: \_\_/\_\_/\_\_

## Cardiac CT Leongatha Hospital

### What to expect?

When you arrive, our cardiac nurse will take you to a change room where you will be given a gown to change into. The nurse will then perform a set of basic observations such as monitoring your heart rate and blood pressure. The success of the Coronary CT scan will depend on a regular and slow heart rate (usually less than 60 beats per minute), if required we may give you medication to lower your heart rate. An injection of x-ray contrast is needed during the scan to show the coronary vessels. This will require an IV cannula (a small plastic tube) to be inserted in a vein near the elbow.

The Coronary CT scan takes about 15 minutes, however depending on your heart rate when you arrive you can expect to be at Leongatha Hospital between 2 -3 hours in total.

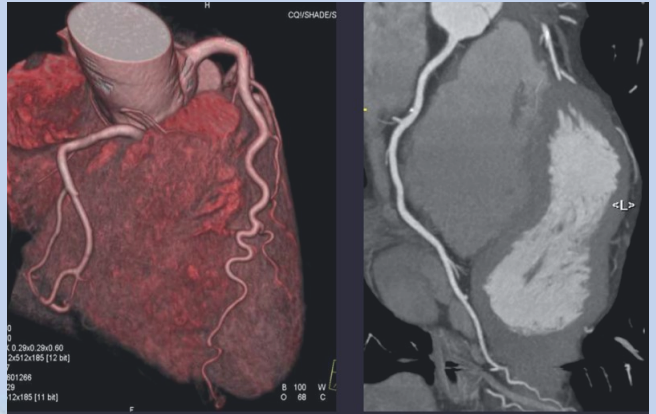
### What do I need to do before my test?

- **No caffeine or stimulants** on day of the scan, for example: tea, coffee, Coca-Cola, energy drinks, Viagra etc.
- Please have only a **small meal at least one hour prior** to the scan.
- **No alcohol** to be consumed the day before, nor day of the scan.
- **No heavy exercise** the morning of your scan

### Medication

Your doctor may have prescribed a medication called Metoprolol (a beta-blocker) to slow your heart rate:

- Metoprolol may cause low blood pressure – you may feel light headed or dizzy.
- To prevent these symptoms or dehydration, **DRINK PLENTY OF WATER.**
- It is advisable you do not drive yourself if you experience any dizziness; we recommend you arrange to have someone drive you home.



Any queries, please contact us on,  
Tel: (03) 5667 5579 or  
Email: [medical.imaging@gshs.com.au](mailto:medical.imaging@gshs.com.au)

Location: Leongatha Hospital  
66 Koonwarra Rd, Leongatha

